

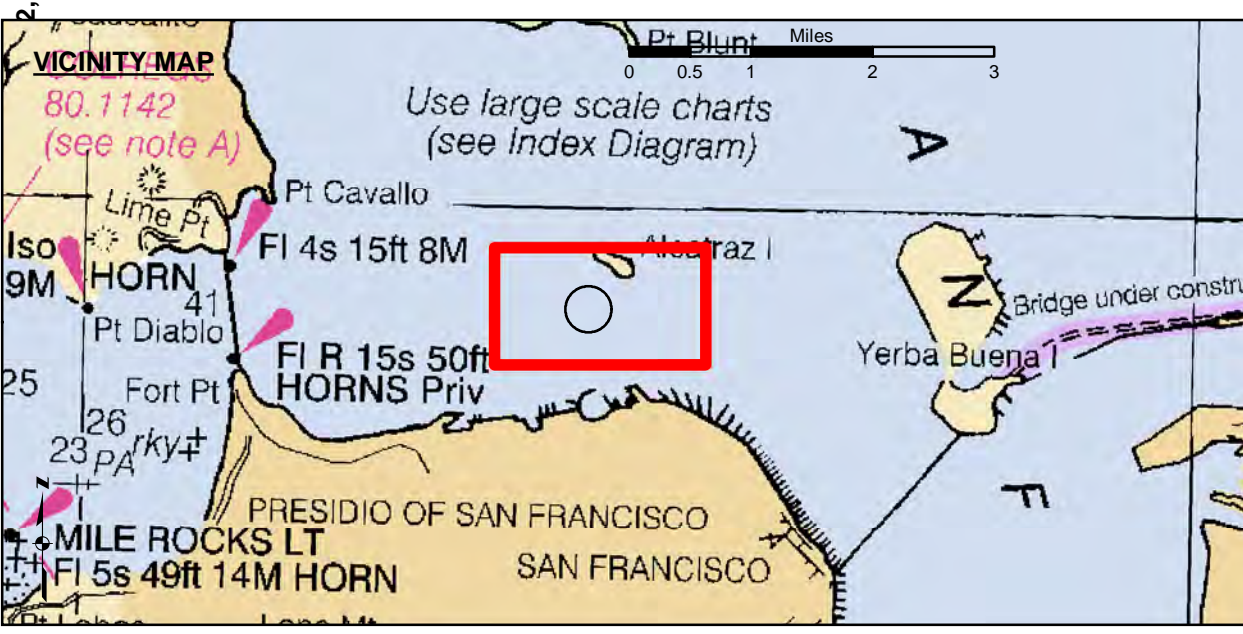
PRELIMINARY ISSUE
THIS PLAN ISSUED FOR
ADVANCE INFORMATION ONLY

LAMBERT COORDINATES		
POINT	X	Y
U.S.G.S. MON: 57 ELEV: - 14.00	6,005,367	2,123,290
TRANSAMERICA BUILDING	6,011,912	2,117,586
1,000 FT. RADIUS	6,005,935	2,127,235
ALCATRAZ LIGHT	6,008,552	2,129,010
ALCATRAZ BUDY	6,008,367	2,127,186

US Army Corps of Engineers
San Francisco District
450 Golden Gate Ave.
San Francisco, CA 94102

DISCLAIMER
The United States Government makes no warranty, express or implied, concerning the accuracy, completeness, or reliability of the information contained herein. The user is responsible for the accuracy of any data used in the application of the data for other than its intended purpose. The user is responsible for the accuracy of any data used in the application of the data for other than its intended purpose. The user is responsible for the accuracy of any data used in the application of the data for other than its intended purpose.

Prepared Under the Direction of	Chart Date:	Nov 21, 2023
LT COLONEL C.E. SHEBETA	Surveyed By:	PDT
Hydro Survey Team Leader	Plotted By:	PDT
Chief, Hydro Survey Section	Checked By:	PDT
Chief, Construction Branch	Drawn by:	PDT



- Federal Navigation Channel
- Shoaling Area
- Placement Area
- Anchorage Area
- Wreck Area
- Submerged Wreck
- Zone III Angle Points
- Beacon, General
- Obstruction Point
- Navigation Buoy
- Navigation Buoy
- Shoalest Sounding*
- Contour Lines Every 10' -20' to -120'

NOTES:
HORIZONTAL COORDINATE SYSTEM:
NORTH AMERICAN DATUM OF 1983 (NAD83). PROJECTED TO THE STATE PLANE COORDINATE SYSTEM (SPCS), CALIFORNIA ZONE III. DISTANCE UNITS IN U.S. FEET.
VERTICAL DATUM:
SOUNDINGS ARE SHOWN IN FEET AND INDICATE DEPTHS BELOW MEAN LOWER LOW WATER.
SOUNDINGS WERE TAKEN BY FATHOMETER AND ARE SHOWN TO THE NEAREST TENTH OF A FOOT. SOUNDINGS ARE BASED ON THE DATUM OF MEAN LOWER LOW WATER AT THE LOCALITY.
SURVEYED BY THE CORPS OF ENGINEERS.
THE PROJECT DEPTH IS -40 FEET AT MLLW.
PLANE GRID AND COORDINATES ARE BASED ON LAMBERT PROJECTION, NAD 83, ZONE III CALIFORNIA AS DESCRIBED IN SPECIAL PUBLICATION NO. 235, PUBLISHED BY THE NATIONAL OCEAN SURVEY.
HORIZONTAL GPS CONTROL:
COAST GUARD D-BEACON
VERTICAL CONTROL:
BENCHMARK: 180 1936
PID: HT0702
MLLW = 3.972m(13.03ft)
NOAA STATION 9414290
TIDE GAUGE LOCATION: SAN FRANCISCO

SAN FRANCISCO BAY
ALCATRAZ DISPOSAL SITE-SF11
CONDITION SURVEY
16 NOVEMBER 2023
Sheet Reference Number 1 of 1